

Line Shape Lighting with visible LED Light source

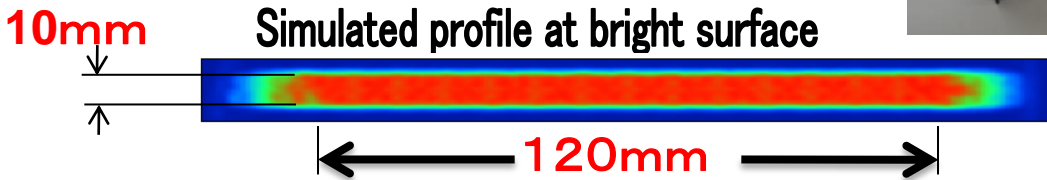
FlatPower® VLL-1

High Power

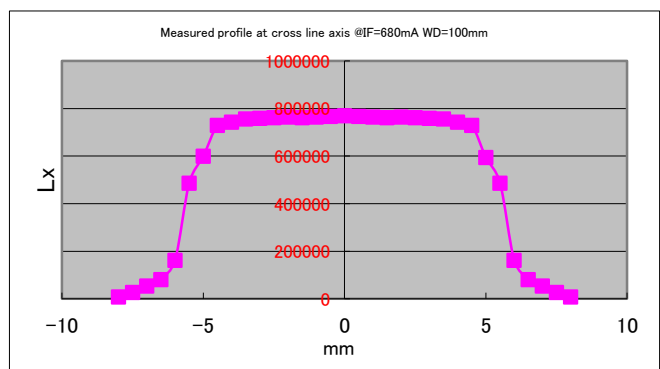
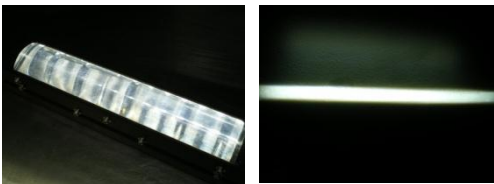
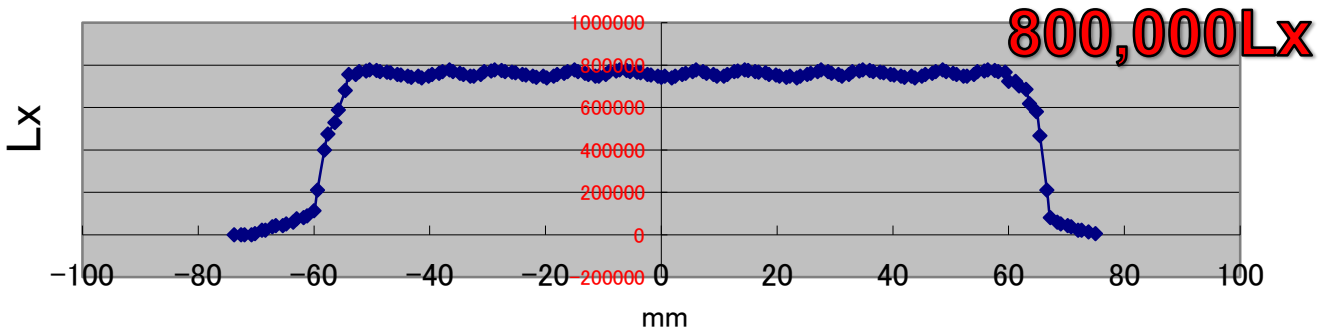
Compact head provides line bright area: 120mm x 10mm

High uniformity of intensity by unique optical design

High frequency PWM and constant current control



VLL-1 measured profile at line direction axis @IF=680mA WD=100mm



Power Supply provides both PWM and constant current control.

Type: NLP-1



Front

Back

Width: 80mm x Depth: 200mm x Height: 135mm
Operation Voltage: AC85V~132V

Bright width 10mm



Head width: 34mm



Dimensions, Weight, Electric power consumption
<Head part>
L200mm W35mm H70mm
Weight: 500g
Power consumption: 25W (12 LED chips)

[Be used for]

LED Lighting for Industrial Use.

NACACUE

NACACUE CORP.

Higashitsuchikawa-cho, Kuze, Minami-ku,
Kyoto 601-8204, JAPAN.
Tel. +81-75-934-4178
Tax. +81-75-934-1870
<http://www.nacacue.co.jp>

Product specifications are subject to change without notice.