

Kohler Illumination LED (Patent pending)

LED lighting using a method of 'Kohler illumination'

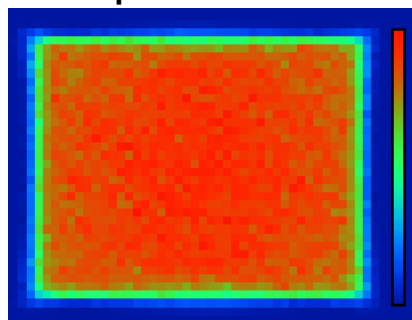


Features

Uniformity of intensity

- Kohler method is used to LED light source by our original idea
- Uniformity achieves as approx. 80%

Simulated profile of irradiated area



Intensity flatness: approx.80%

Shape of bright area can be custom made

Bright area example



Area



Cross



Spot



Line

It provides uniform bright area from any distance

Example of product

distance	Name (spot diameter)	WD	Illuminance lx
Near	Operating light (100x125mm)	500mm	4000~4500Lx
	Reading light (300mmx400mm)	1100mm	600~700Lx
	Down light (810mmx1100mm)	2500mm	100~150lx
Far	Collimate light (150mmx150mm)	10m	850~900Lx

We accept design and production offering

Kohler Illumination LED Specification

Dimensions

▪ Short distance type

Dimensions: $\Phi 47 \times 85.5 \text{mm} \pm 4$

Weight: 200g

※Optical filter mount M40.5 at front



▪ Long distance type

Dimensions: $\Phi 47 \times 197.5 \text{mm} +7, -4$
(Front diameter $\Phi 145$)

Weight: 440g



Power consumption

▪ Operating voltage: DC12V

▪ Full current: 300mA

▪ Socket type: GX5.3/L150(C-24N)

※Common to both type

Socket



Option Parts

▪ AC adaptor for 100V AC use

▪ Fixing bracket (with 1/4-20UNC camera tripod screw)

※provides any shape and screw as custom made

NACACUE CORP.

Higashitsuchikawa-cho, Kuze, Minami-ku,

Kyoto 601-8204, JAPAN.

Tel. +81-75-934-4178

Tax. +81-75-934-1870

<http://www.nacacue.co.jp>